

# Ichthyology

**Ichthyology:** Science dealing with fish, that is a branch of Biology dealing with fish.

**Fish:** is aquatic cold blooded vertebrate live in water provide with fins , gills , with or without scales..

**There are more than 22000 species of fish.**

**In Iraqi water there are more 68 species.**

Fish differ in size ,the smallest like gombosia, largest fish like shark and whale.

Also differ in color ,fish differ in present location, and in food habits.

## **Fish classified according to :**

### **Temperature:**

- 1- cold water fish
- 2- warms water fish

### **Salinity :**

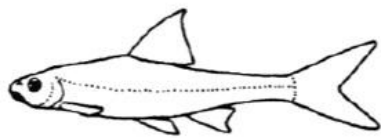
- 1- fresh water
- 2- Marin water fish

### **Food habits:**

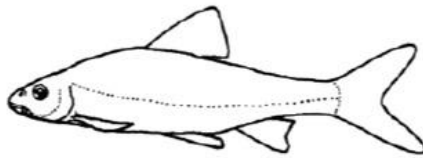
- Carnivorous ( eel ,shark)
- Herbivorous( grass carp)
- Omnivorous ( common carp)

### **Shape:**

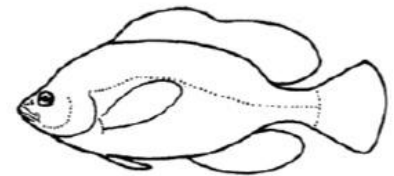
- torpedo like
- ribbon like
- rounded globe like
- compressed
- Depressed



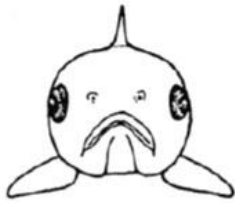
Elongate



Moderate



Deep



Rounded



Compressed (slightly)

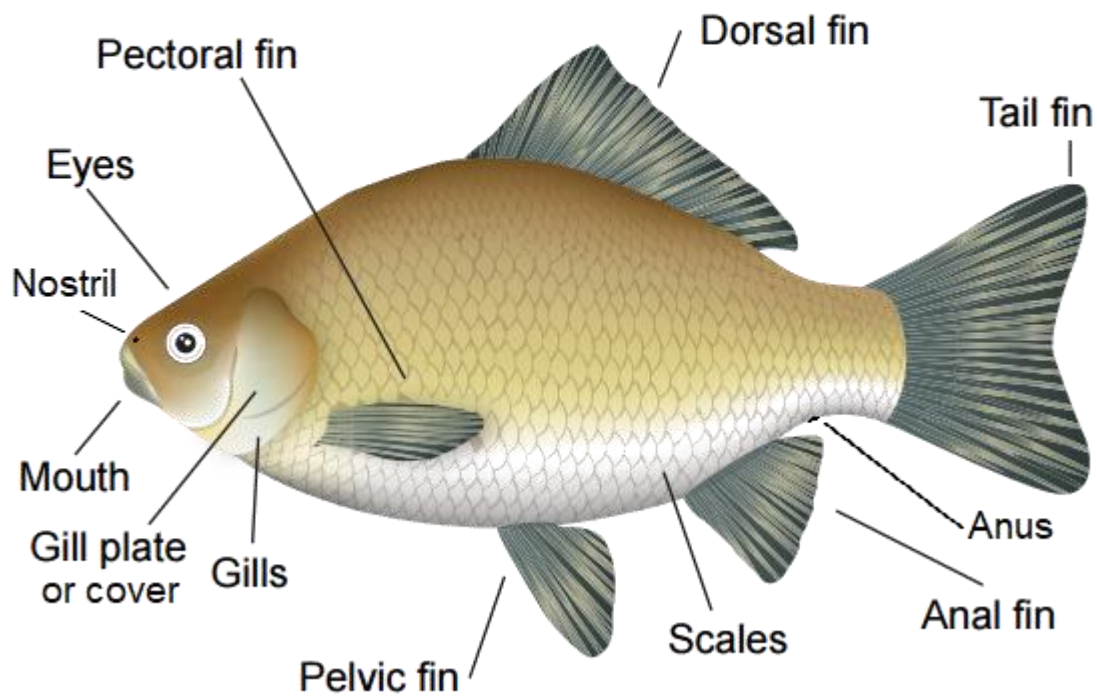


Compressed (strongly)



Depressed (strongly)

### Illustration of the main external anatomical features of fish



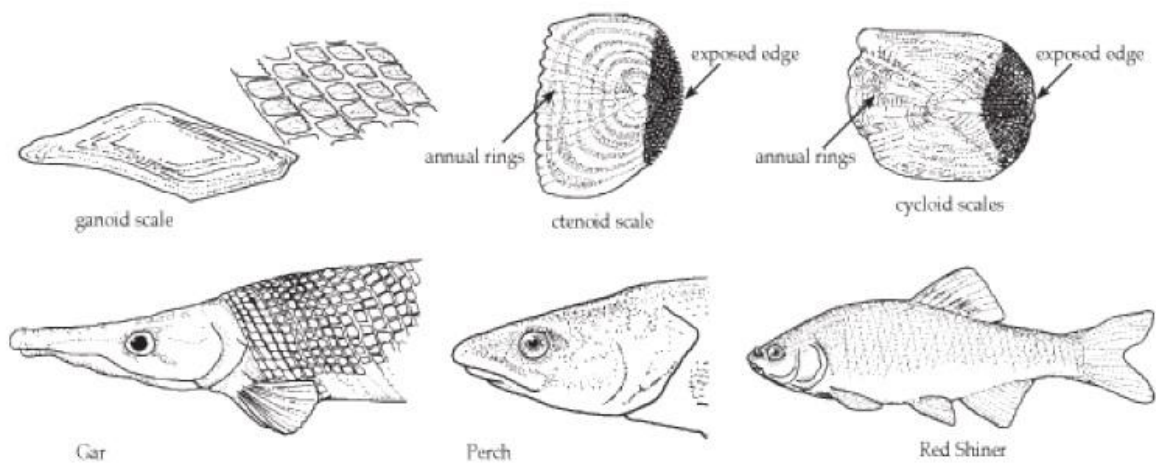
**Body divided in to : head , trunk , tail.**

The body of fish in general is torpedo like or spindle-shape which facilitate the swimming through water and reduce the energy consuming in their processes

The trunk are cover with scales which are differ through the body

Scales is bony structure embedded in skin,it differ in number and size and arrangement according to species of fish.

- 1- Ctenoid scales (border of scales tooth like)
- 2- Cycloid scales(border of scales smooth)



- 3- Placoid