

## *Taenia hydatigena*

**Class:** Cestada

**Family:** Taeniidae

**Synonym:** *T. marginata*, *Cysticercus tenuicollis*

**Predilection site:** small intestine (final host); abdominal cavity, liver (intermediate host).

**Final host:** dog, fox, weasel, stoat, polecat, wolf, hyena.

**Intermediate host:** sheep, cattle, deer, pig, horse.

### **Morphology, Gross:**

*T. hydatigena* is a large tapeworm measuring up to 5 m in length. The scolex is large and has two rows of 26 and 46 rostellar hooks. Gravid proglottids are 12×6mm and the uterus has five to ten lateral branches.

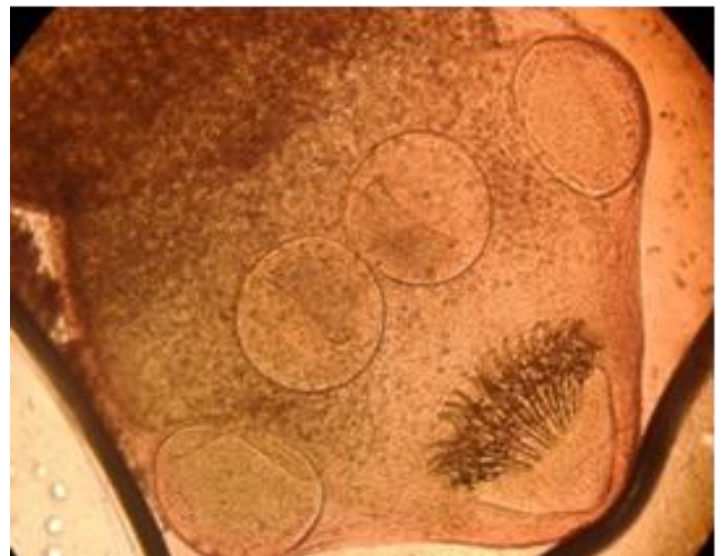
**Microscopic:** eggs are oval or elliptical and measure 36-39×34-35µm.

### **Diagnosis:**

Often the first sign of tapeworm infection in dogs is the presence of proglottids in the faeces or more frequently the perianal area as a result of the active migration of the segments.

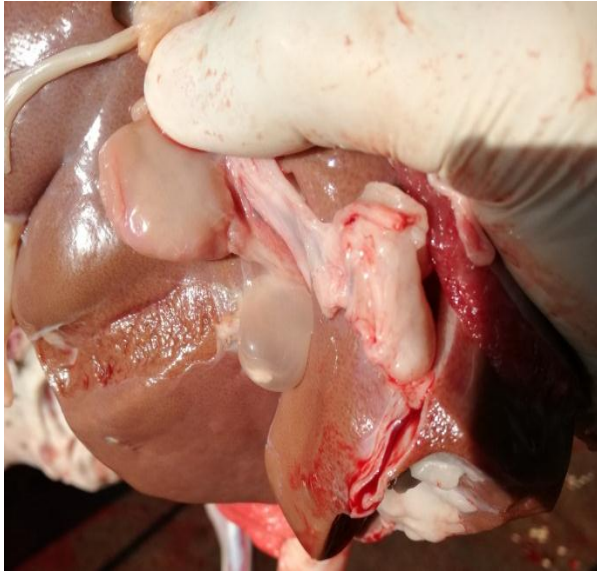


**Omentum of sheep infected with  
*Cysticercus tenuicollis* cyst**



**Scolex of *Cysticercus tenuicollis***

Cestodes  
Lab5



**Liver of sheep infected with  
*Cysticercus tenuicollis* cyst**



**Adult worm of *T.hydatigena***



**Adult worm of *T.hydatigena***

## ***Taenia pisiformis***

**Class:** Cestoda

**Family:** Taeniidae

**synonym:** *cysticercus pisiformis*

**Final host:** dog, fox

**Intermediate host:** rabbit, hare

**Predilection site:** small intestine (final host); peritoneum, liver (intermediate host).

### **Morphology, Gross:**

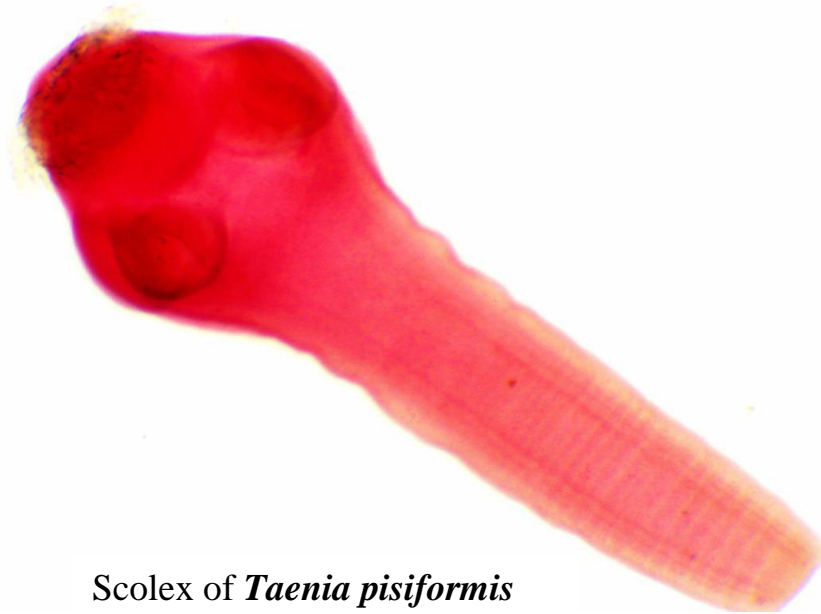
The adult tapeworm can measure up to 2 m in length.

**Microscopic:** the adult tapeworm has a large scolex with narrow strobili and the rostellum has 34-48 hooks. Gravid proglottid have a uterus with 8-14 lateral branches on either side. *cysticercus pisiformis* is small pea-like transparent cyst. Eggs are oval or elliptical and measure  $37 \times 32 \mu\text{m}$ .

### **Diagnosis:**

Infection of the intermediate host is detected through the presence of a single cyst or a cluster of several cysts in the abdominal cavity.

**\* Taenia egg:** eggs have no shell, onchospher enclosed by two embryonic membrane connected by septa radially straight, arranged between these membranes block of protein type keratin and brown in color



Scolex of *Taenia pisiformis*



*Taenia* egg