

Clonorchis sinensis (Opisthorchis sinensis):

Common name: chinese or oriental liver fluke.

Parasite class: Trematoda

Family: Opisthorchiidae

Final host: man, dog, cat, pig, mink, badger.

Intermediate host: snails and fishes.

Morphology: gross

The adult fluke is flat, transparent pinkish, wide posteriorly and tapering anteriorly and may reach to 25×5mm. the cuticle is spiny in the young fluke but smooth in the adult.

Morphology: microscopic

The adult fluke have multi branched testis.

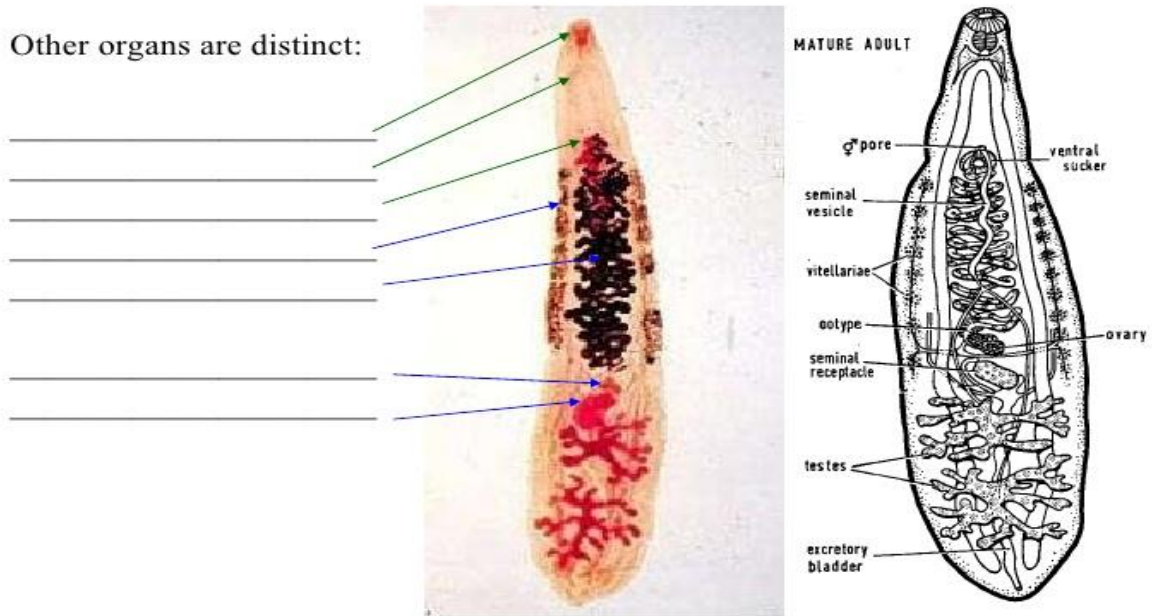
Eggs:

Eggs have a thick light yellowish brown wall, 27-35×12-20µm in size, they contain a miracidium when they are laid, the internal structure of which is a symmetrical. The convex operculum of the egg fits in to a prominent rim of the shell, while the opposite pole frequently bears a small hook-like structure.

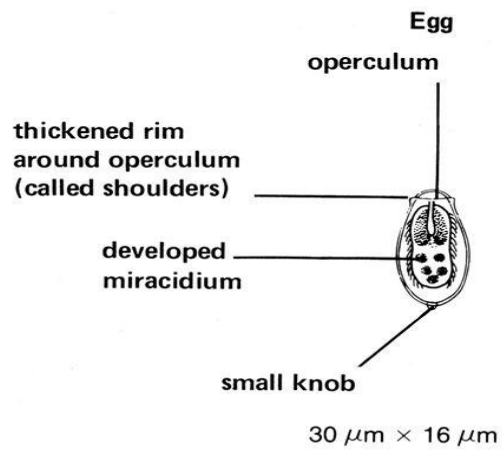
Diagnosis:

- 1- Identification of the characteristic eggs in faecal samples.
- 2- Several serological testes, ELISA may be of value.

Morphology of *Clonorchis sinensis* adult



Clonorchis sinensis egg



Copyright © 2012 F. A. Davis Company www.fadavis.com

Copyright © 2012 F. A. Davis Company www.fadavis.com

Paramphistomum cervi

Synonym: *Paramphistomum explanatum*

Common name: Rumen fluke.

Predilection site: Rumen

Parasite family: paramphistomatidae.

Final hosts: cattle, sheep, goat, deer, buffalo and antelope.

Intermediate hosts: water snails.

Morphology: gross

The adults are small, conical (pear-shape) maggot-like flukes about 1.0 cm long and light red in colour when fresh. One sucker is visible at the tip of the cone and the other at the base. The tegument has no spines. The larval stages are less than 5.0mm. fresh specimens having a pink colour.

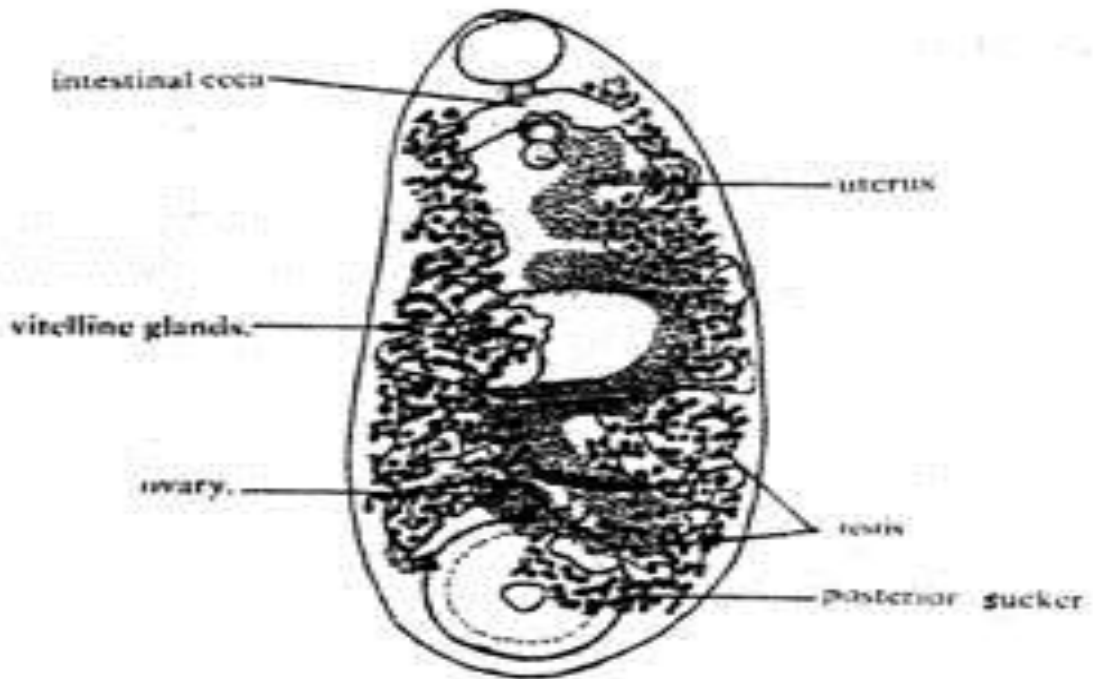
Morphology: microscopic

The eggs resembles that of *Fasciola hepatica*, being large (about 130-180µm), and operculate, but is clear rather than yellow.

Diagnosis:

- 1- Clinical signs
- 2- Fecal examination is of limited value since the acute disease occurs during the prepatent period.
- 3- Postmortem examination and recovery of the small pink-coloured immature flukes from the duodenal mucosa and ileal contents.

Trematoda
Lab4



Paramphistomum cervi

Trematoda
Lab4



Rumen flukes