

Diphylllobothrium latum



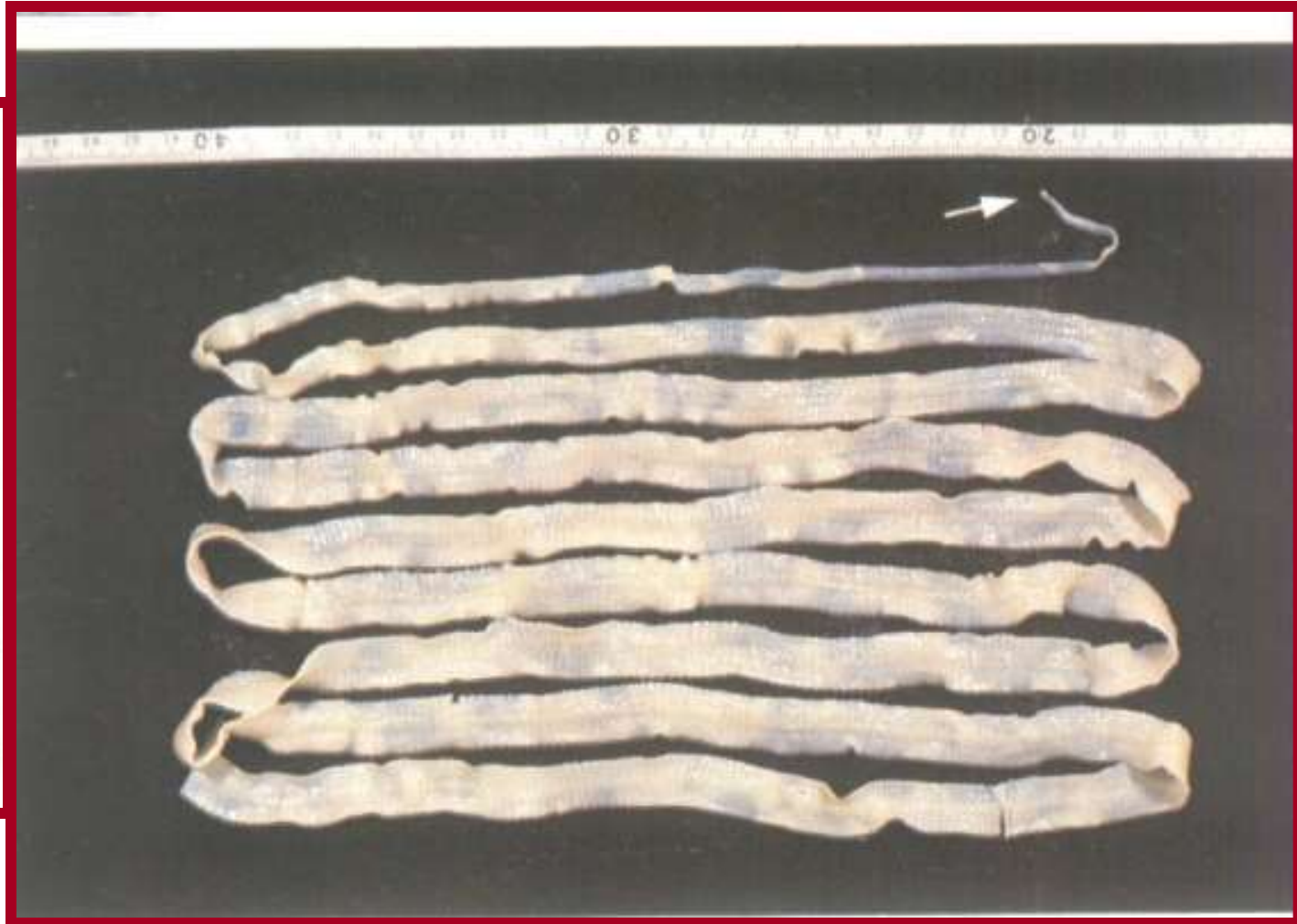
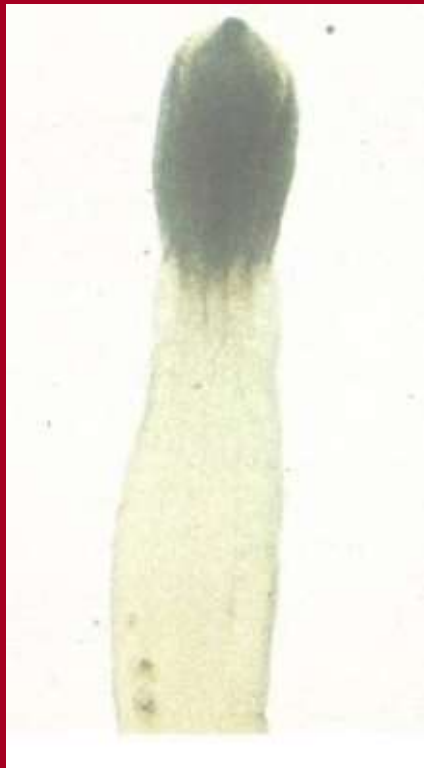
THE BROAD FISH TAPE WORM

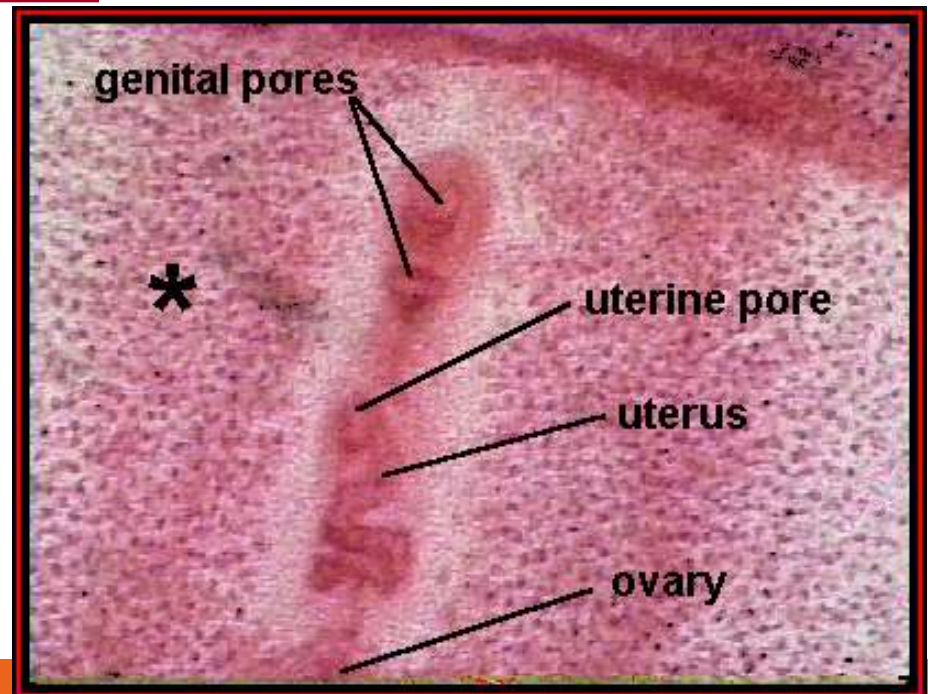
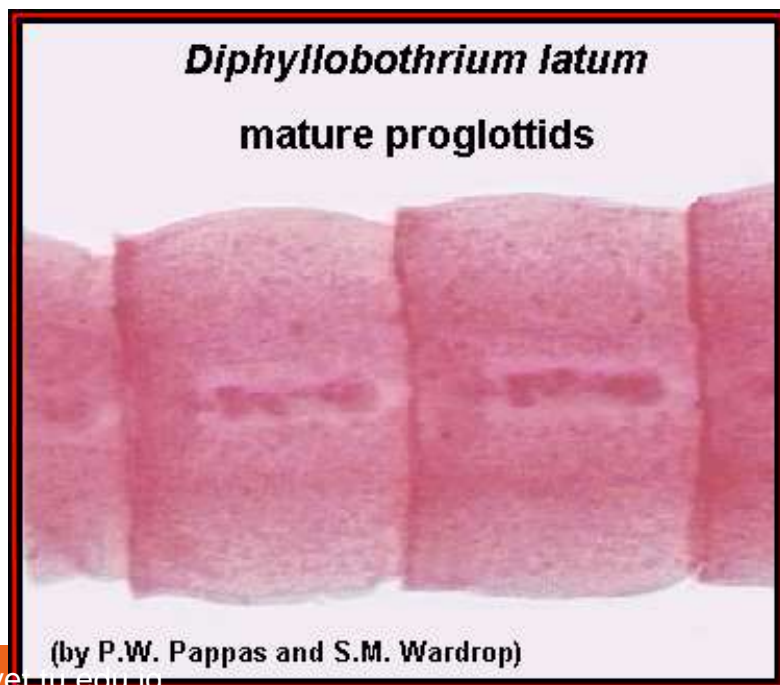
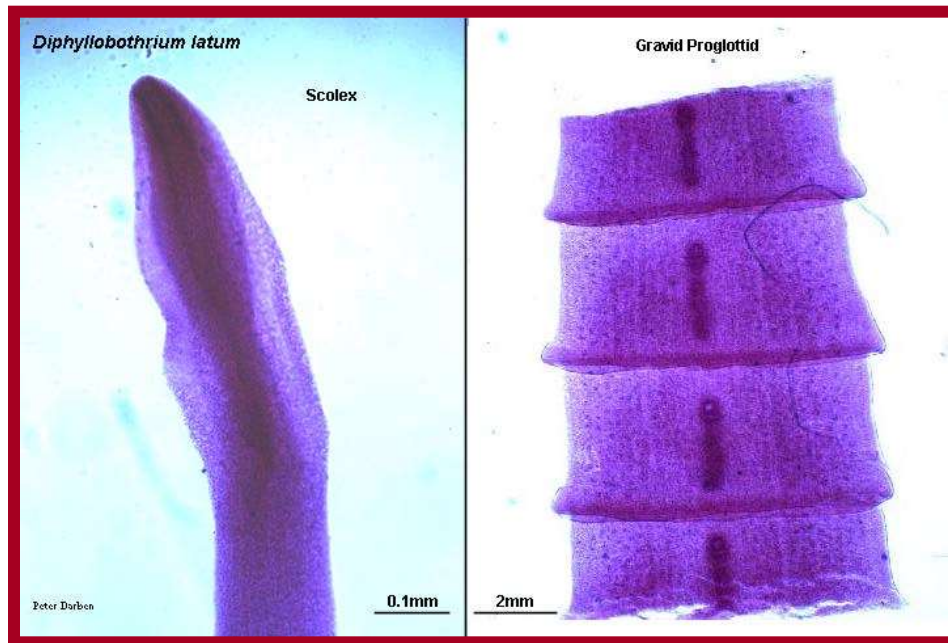
Order Pseudophyllidea



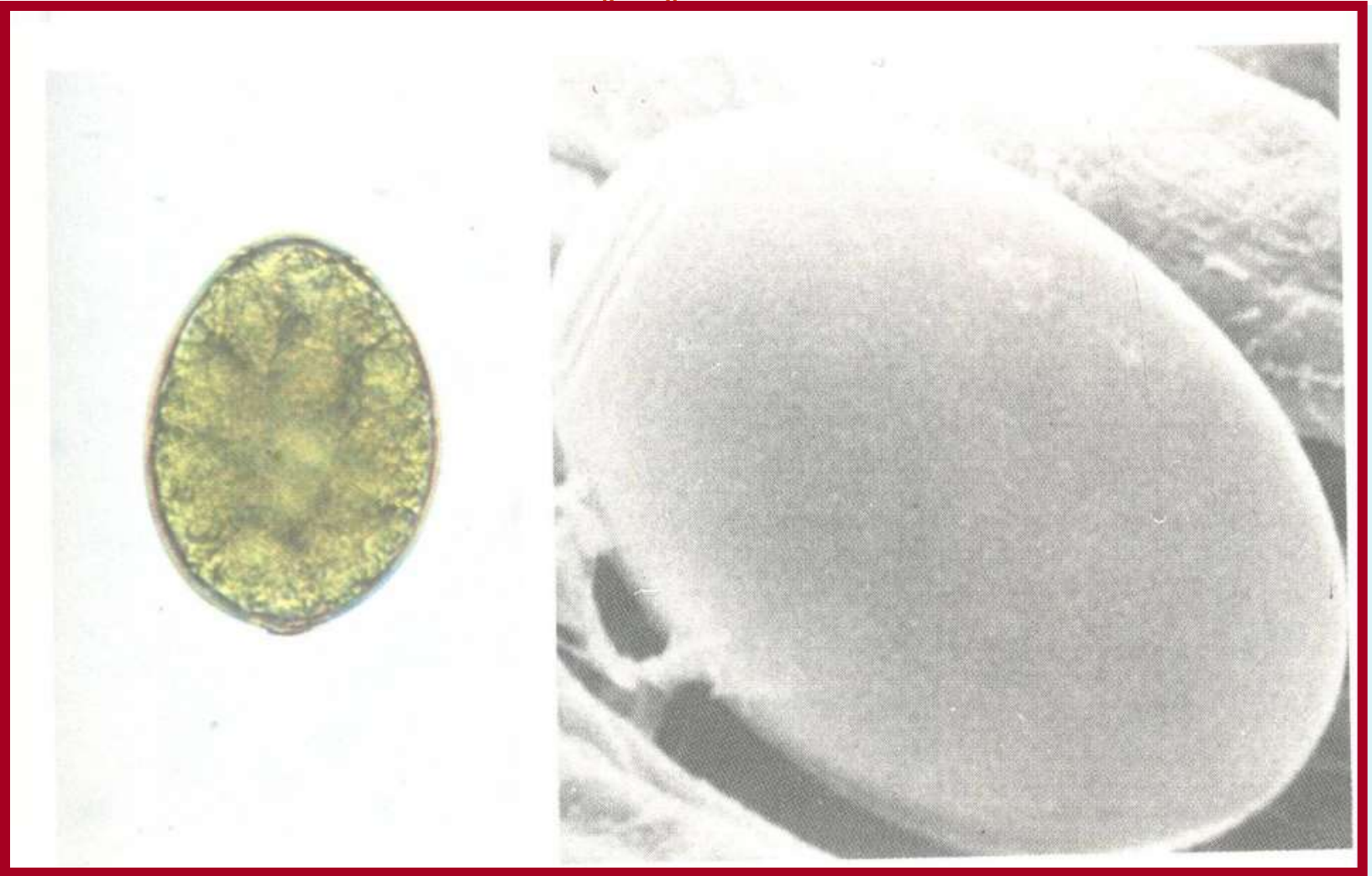
- 1. Adult tapes usually parasites of fish, also other vertebrates.
- 2. Scolex is variable, but always with longitudinal slits.
 - a. Bothria (usually 2) as lateral slits.
 - b. Distinct from bothridia - more leaf shaped, often 4.

Adult *Diphyllobothrium latum*.





Egg of *D.latum*.



Habitat:

- **Small intestine.**

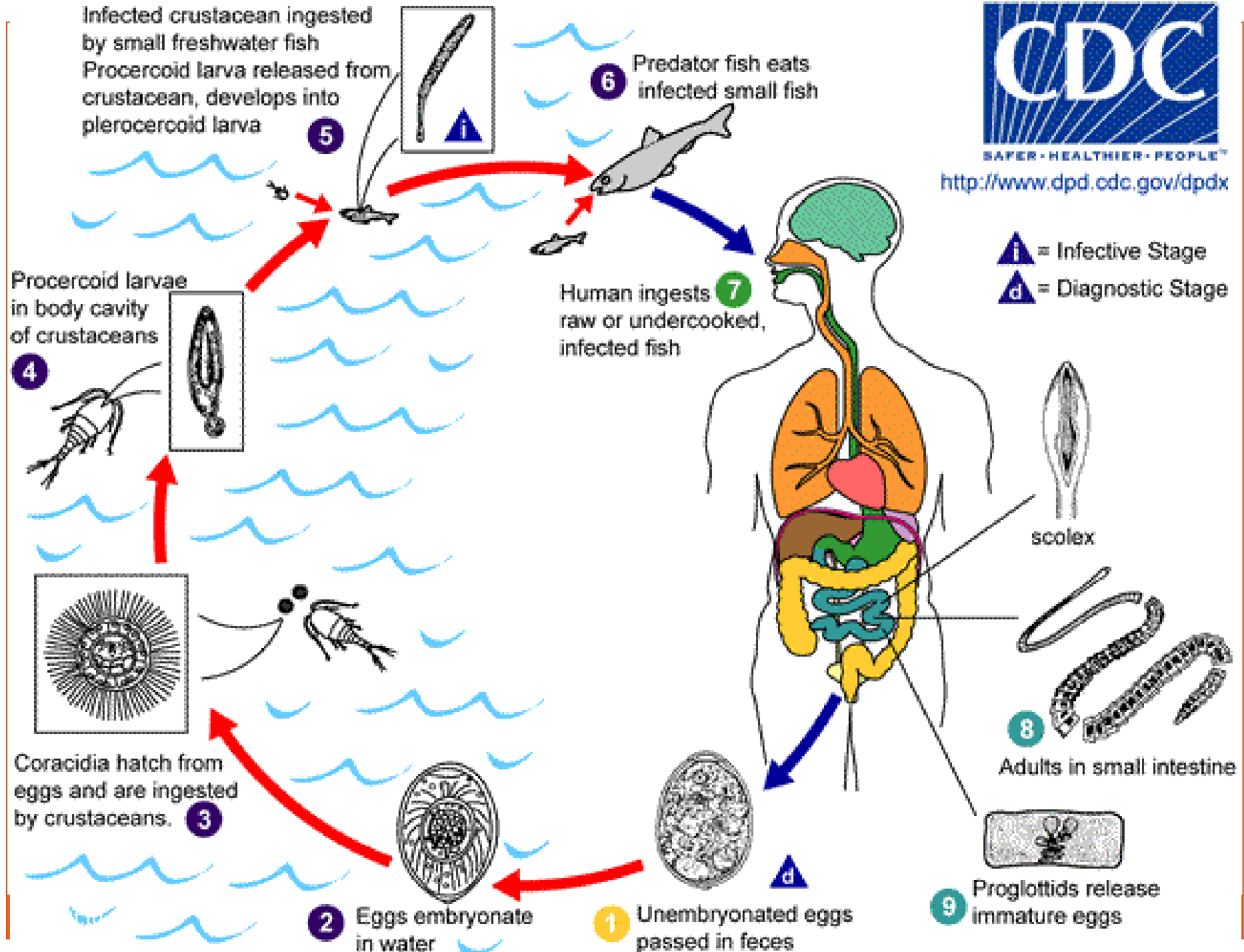


Hosts:

- **D.H: man**
- **R.H: fish- eating animals.**
- **1st I.H: *Cyclops* or diatomes.**
- **2nd I.H: fresh water fish e.g. salmon.**

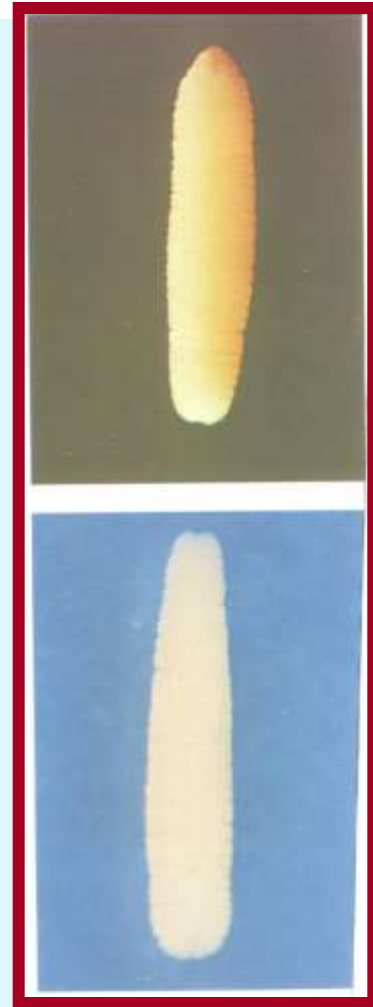
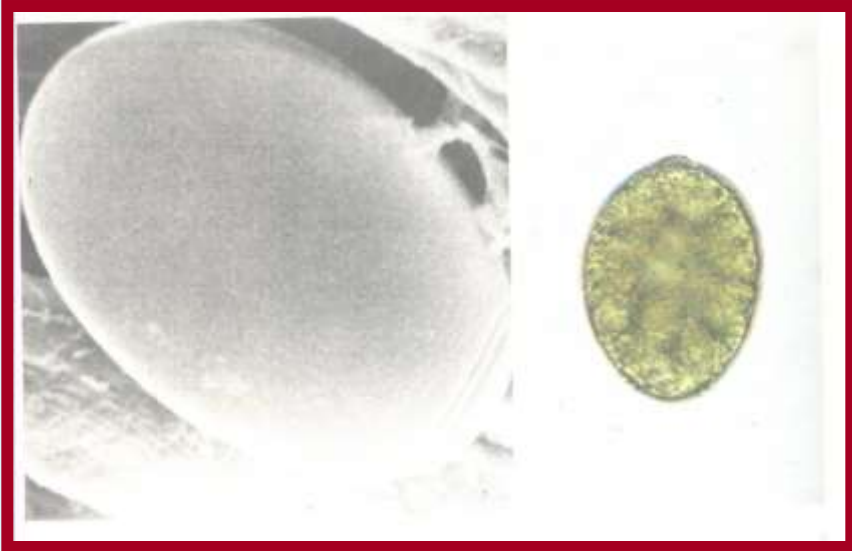
Mode of infection:

Ingestion of improperly cooked or smoked fish infected with PLEROCERCOID LARVA.





Egg & plerocercoid larva of *D. latum*.



Pathogenesis & Clinical picture.



- **Asymptomatic.**
- **Intestinal disturbances:** colic, hunger pains, nausea, vomiting, diarrhea & loss of appetite.
- **Intestinal obstruction.**
- **Neurological manifestations:** e.g. headache, insomnia & convulsions.
- **Pernicious anaemia:** due to toxins & vit. B12 deficiency.