



13/ Organ: liver - gallbladder

Lesions:- gallbladder wall is edematous, grayish and thickened

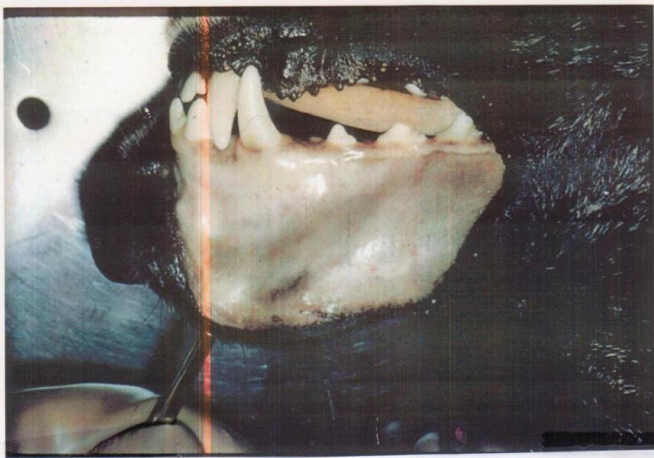
Diagnosis:- Canine infectious hepatitis



12/ organ: liver

Lesion: liver is enlarged and congested, small scattered focal areas of necrosis in the parenchymal surface and some fibrin on the capsule.

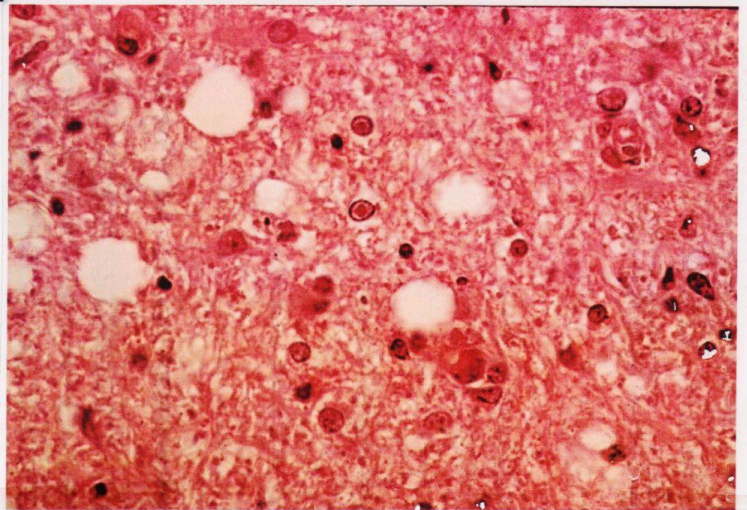
Diagnosis:- Canine infectious hepatitis



11/ part: Mouth - Gingiva

Lesion:- pale and slightly yellow gingiva
"gingival icterus"

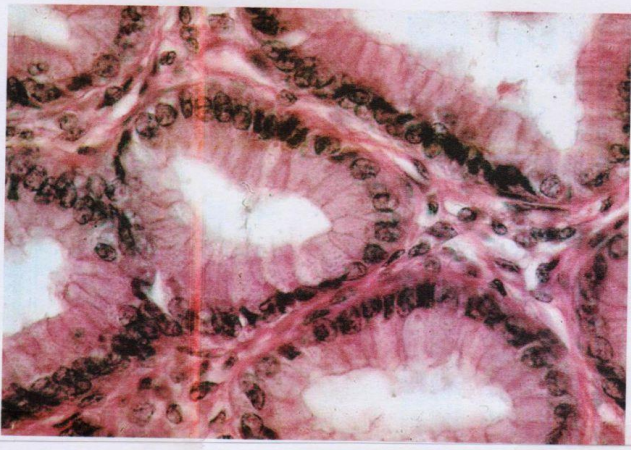
Diagnosis:- Canine infectious hepatitis



7/ Brain - histo.

Lesion: vacuoles and many glial cells with inclusion bodies

Diagnosis:- Canine distemper



6/ Stomach - histo.

Lesion:- Few pink to red bodies in the cytoplasm of several gastric glands.

Diagnosis:- Canine distemper



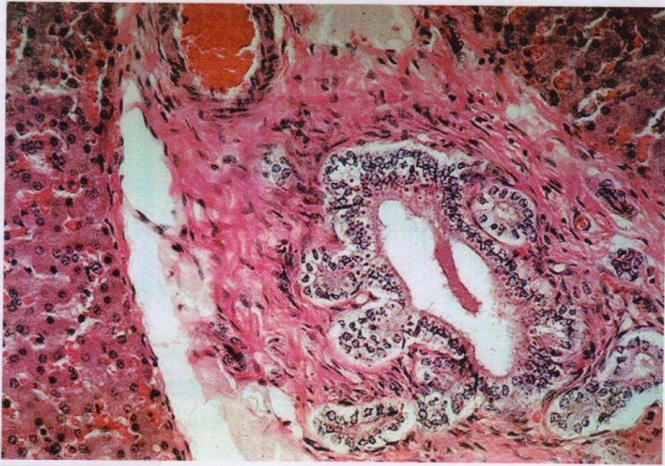
5/ Brain - histo.

Lesion:-

Thick chronic inflammatory cells cuff

"non-suppurative encephalitis"

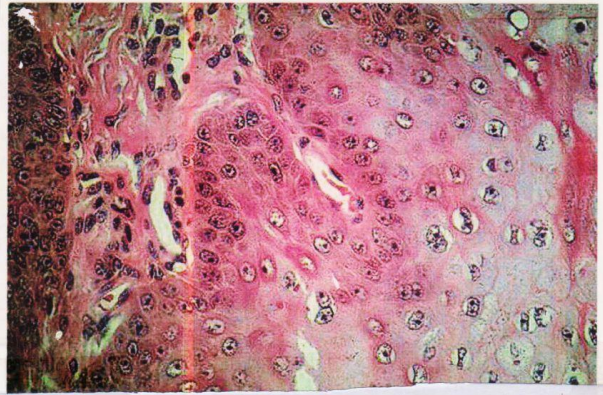
Diagnosis! Canine distemper



4/ liver - bile duct histo."

Lesion:- multiple intracytoplasmic inclusion bodies of many ductule epithelial cells.

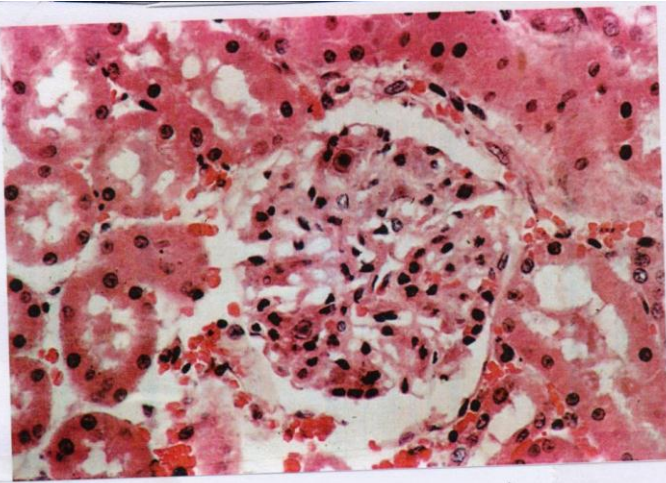
Diagnosis! Canine distemper



3/ Footpad - epithelium /histo.

Lesion: marked of proliferation of epithelium surface with pink to red intracytoplasmic inclusion bodies.

Diagnosis! Canine distemper



14/ organ: Kidney - Histo

Lesion: Intranuclear inclusion bodies in endothelial cells of the glomerular tuft.

Diagnosis: Canine infectious hepatitis



2/ teeth

Lesion: Abnormal separation of affected teeth with irregular loss of enamel with discoloration

Diagnosis: Canine distemper