

Feline Panleukopenia:



Fig 1 :Hemorrhagic enteritis as a consequence of feline panleukopenia virus infection



Fig 2 :-Intestinal damage as a consequence of feline panleukopenia virus infection; sloughing of gut epithelium and fibrinous "casts" are prominent

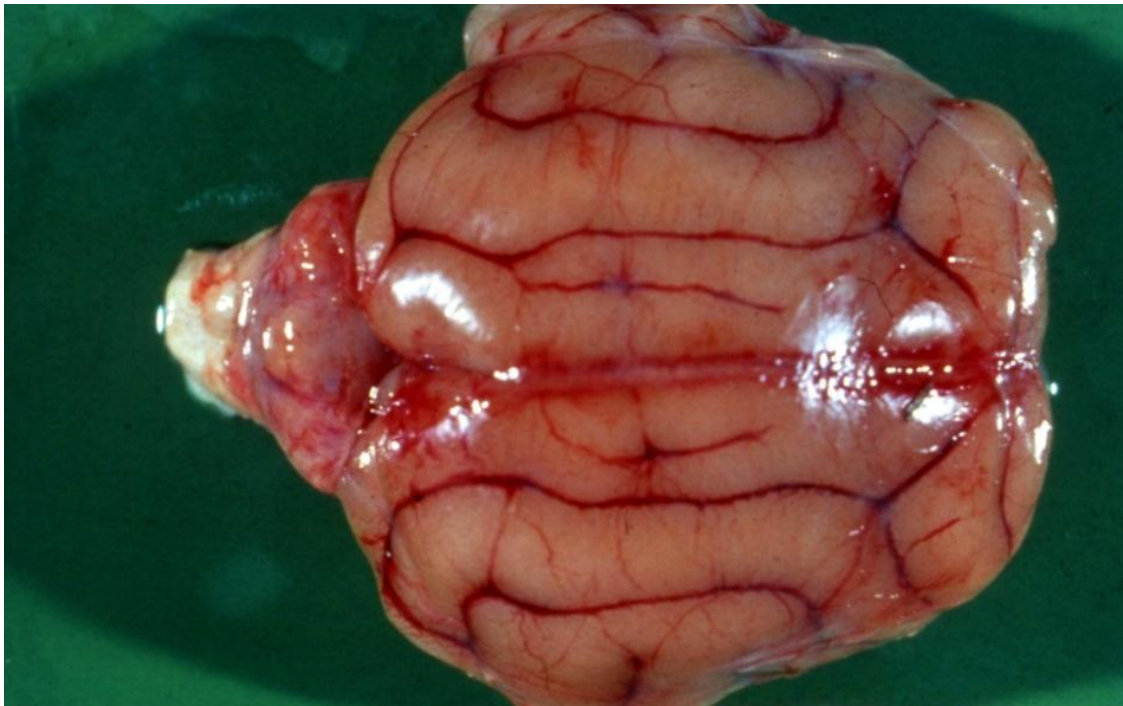


Fig 3 :-Cerebellar hypoplasia in a kitten infected in utero with feline panleukopenia virus

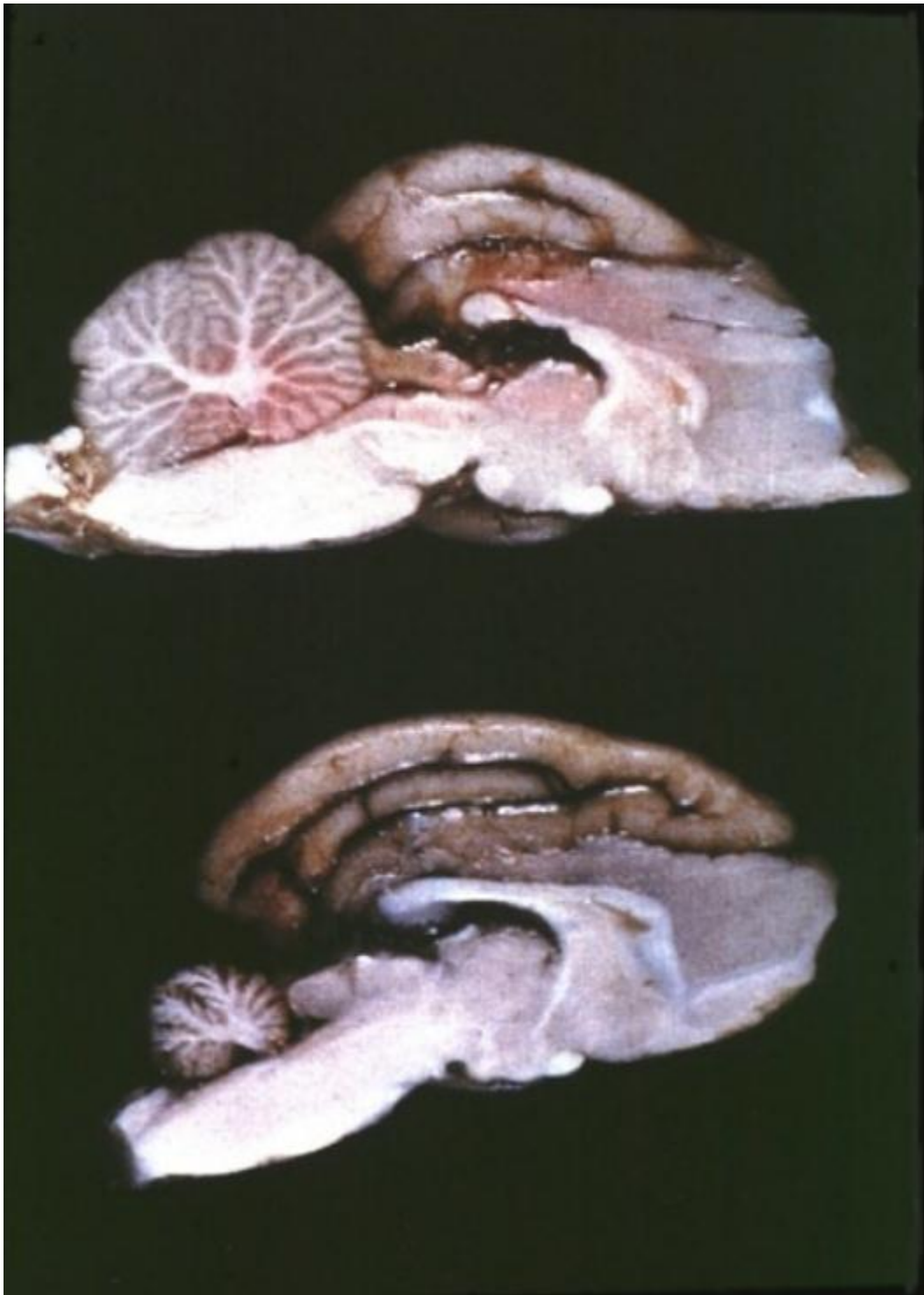


Fig 4:- Cerebellar hypoplasia (below) in a kitten infected in utero with feline panleukopenia virus; a normal brain is shown for comparison (above)